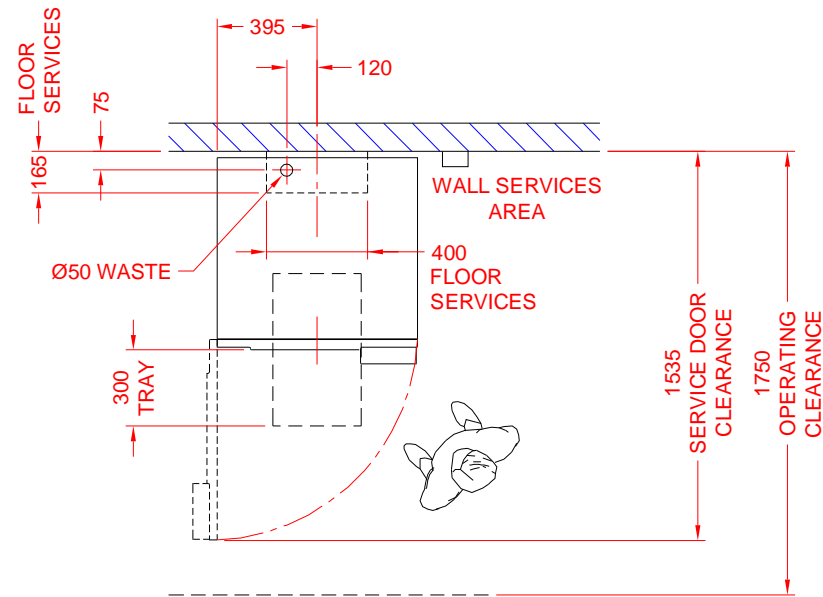
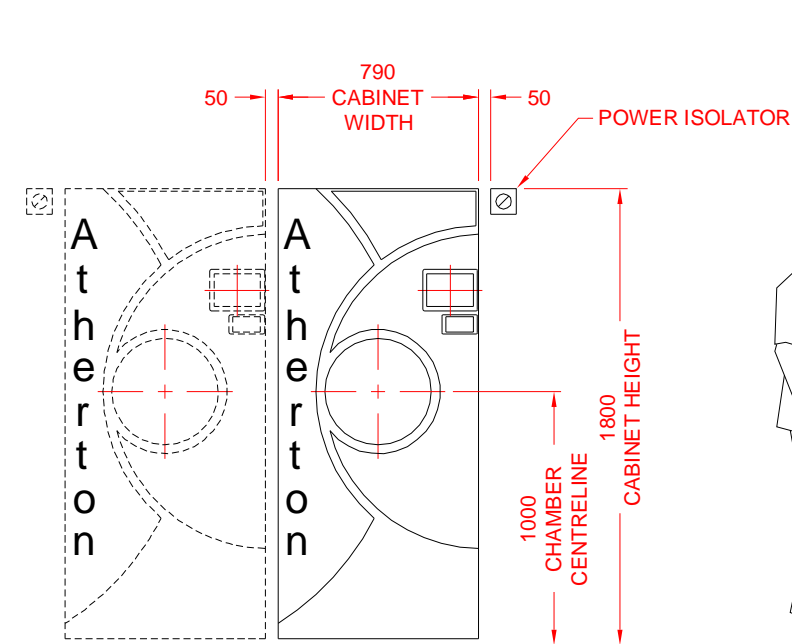


NOTE! FOR SERVICES ACCESS
MOVE UNIT FORWARD.

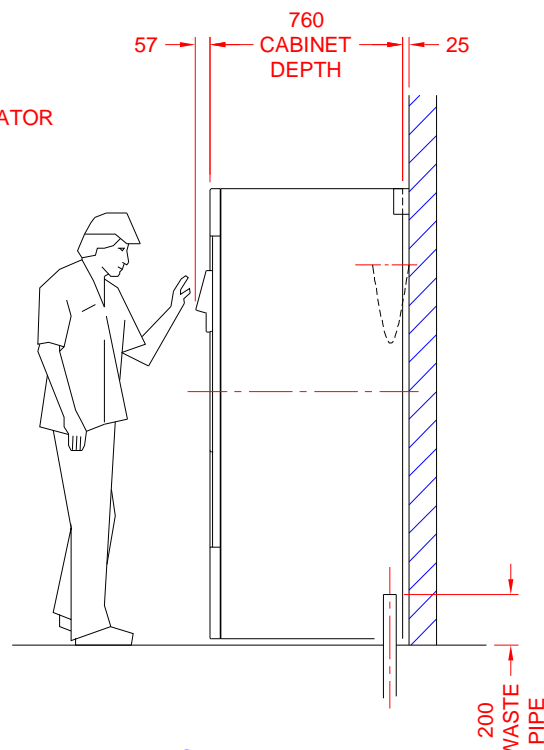
NOTE! IF SERVICES TERMINATE THROUGH
THE FLOOR THEY MUST BE WITHIN THE
FLOOR PENETRATION AREA (400 x 165MM)



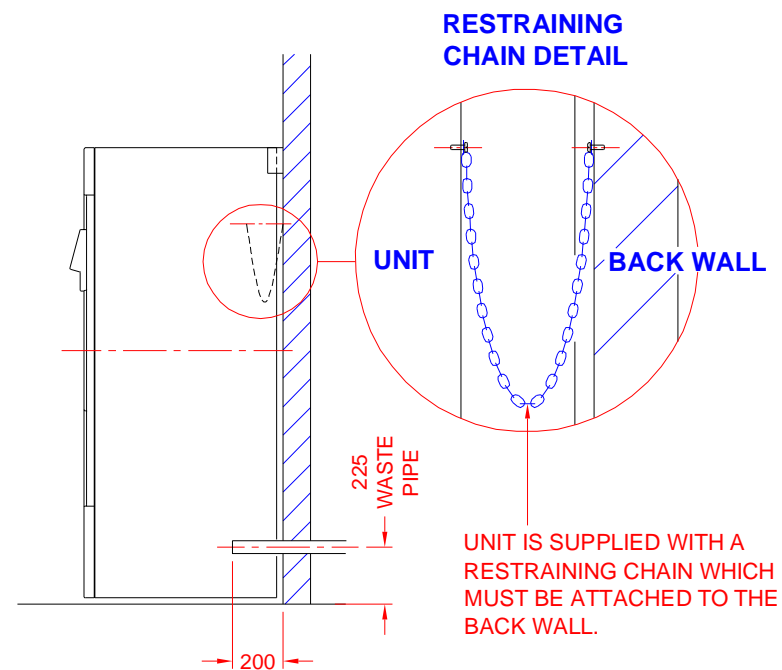
PLAN VIEW



FRONT ELEVATION



**SIDE ELEVATION
FLOOR WASTE**



**SIDE ELEVATION
WALL WASTE**

SERVICE REQUIREMENTS

STEAM - SUPPLY TO BE BETWEEN 400 & 600 KPA AT 0.97 DRYNESS FACTOR, CHLORIDE FREE COMPLETE WITH 15MM ISOLATING VALVE. AVERAGE STEAM CONSUMPTION IS APPROXIMATELY 30 KG/HR WITH A MAXIMUM CONSUMPTION OF 50 KG/HR FOR 3 MINUTES PER CYCLE.

COLD WATER - SUPPLY TO BE CONSTANTLY BETWEEN 200 & 500 KPA, MAXIMUM TEMPERATURE 25°C, TREATED IF OVER 2 PPM (0.02 MMOL/L) HARDNESS, CHLORIDE FREE, COMPLETE WITH 15MM ISOLATING VALVE & BACK FLOW PREVENTION TO AS 3500.1. AVERAGE WATER CONSUMPTION IS APPROXIMATELY 8 LITRES/MIN WITH A MAXIMUM OF 18 LITRES/MIN FOR 3 MINUTES PER CYCLE.

WASTE - Ø50MM TO SEWER IN COMPLIANCE WITH AS 3500.2. AVERAGE WASTE OUTLET TEMPERATURE 50°C WITH A MAXIMUM OF 100°C SHORT TERM. ATHERTON RECOMMENDS THE INSTALLATION OF A CORRECTLY DRAINED FLOOR WASTE TO HELP REDUCE POTENTIAL DAMAGE IN CASE OF A MAJOR STEAM OR WATER LEAK.

POWER - TO AS 3000. SINGLE PHASE 10 AMP. ATHERTON RECOMMENDS "CLIPSAL 56S0310" 3 PIN OUTLET & "CLIPSAL 56SW110" SWITCH.

VENTILATION - ATHERTON RECOMMENDS VENTILATION FOR THE REMOVAL OF HEAT LOSS.

PRODUCT CODE & SPECIFICATIONS

TSC4 - TANGENT SERIES COBRA, RETICULATED STEAM, CABINET STERILIZER. CHAMBER DIMENSION: Ø400 x 660MM DEEP. HEAT LOSS FROM CABINET AT 21°C : 950 WATTS. OPERATING WEIGHT (CHAMBER FILLED WITH WATER) : 440KG PACKED WEIGHT : 380 KG

GENERAL NOTES

ALL DIMENSIONS ARE IN MM.
GENERAL TOLERANCE ON BUILDING ±5MM.
ALL SERVICE SPECIFICATIONS ARE DYNAMIC.
SERVICES AND BUILDING REQUIREMENTS ARE TO BE SUPPLIED BY THE CLIENT UNLESS OTHERWISE SPECIFIED.

Atherton

STERILIZER INSTALLATION DETAILS

TSC4 TANGENT SERIES COBRA STERILIZER

CLIENT APPROVAL

PROJECT.....

APPROVED BY (PRINT NAME).....

SIGNED..... DATE.....

SPECIAL REQUIREMENTS

IF DRAWING IS NOT RETURNED WITHIN 30 DAYS, ATHERTON WILL ASSUME THAT ALL SERVICES & SPACE REQUIREMENTS HAVE BEEN PROVIDED. ATHERTON TAKES NO RESPONSIBILITY FOR DELAYS, COSTS OR DAMAGE TO EQUIPMENT IF PURCHASER DOES NOT SUPPLY SERVICES AS DETAILED IN THIS DOCUMENT AND WARRANTY COVER MAY BE VOID.

DRAWN. P.L.G.	DATE. 09/11/2011	APPROVED.
DOCUMENT NO. 025224	REV NO. 0	SCALE 1:30
SHEET SIZE A3	DATE. 14/11/2011	R.OLIVER