

# INNOVA<sup>®</sup>

## New M2 and M3 series

*The uncompromising Washer-Disinfectors*



**INNOVA<sup>®</sup>**

New M2 and M3 series

# Flexible equipment for economic results: modular washer/disinfectors

Range of applications

## BHT - the expert for innovative cleaning and disinfection technology

For more than 25 years BHT has been one of the acknowledged leaders in the development and production of innovative washer-disinfectors in the areas of healthcare, laboratory and pharmaceutical industry. BHT is a medium sized, internationally active enterprise with two production sites in the heart of Bavaria, Germany.

Extensive patents and other protective rights document the high potential of BHT. Of course, BHT is certified according to ISO 9001:2000 and EN 13485:2003.

Our long experience in the development of high quality machines, which cope with the high requirements in the CSSD or the reprocessing of flexible endoscopes, offer vital benefits also in other areas: when used in medical practises, laboratories, the chemical and pharmaceutical industry.

**In general:** only if the control of all wash parameters is safely mastered, optimal results can be guaranteed.

The four parameters Temperature, Time, Mechanics and Cleaning Agents must interact perfectly. Only then optimum cleaning results can be achieved in a Washer-Disinfecter.

# M3



*Frost & Sullivan appreciated the innovative power, specifically in the field of endoscopy reprocessing by awarding the Product Innovation Price Healthcare 2005 for the BHT INNOVA® CC for checking the individual channels of flexible endoscopes.*

INNOVA® M3 with base

**INNOVA®**  
New M2 and M3 series

# Well prepared for the future: The new INNOVA M2 and M3

## Overview of versions

### Safety in reprocessing

- Compliant to EN ISO 15883
- Validatable, type tested and certified
- Compliant to EN ISO 17664
- Compliant to German RKI (former BGA) regulations and European MDD guidelines
- Microprocessor controllers monitors all process parameters

### Functional flexibility

- choice of process cleaning agents<sup>1</sup>
- rack coding available as option
- reprocessing of most instruments and accessories
- complete documentation with optional cycle printer or connection to PC with cycle-documentation system "Med.Basic"
- scanner available as option

<sup>1</sup> note manufacturer's declaration of compliance

### Economical in operation

- Minimal maintenance effort
- Use of process cleaning agents can be optimized
- Modular, scaleable and combinable
- Optimized reprocessing time
- simple operation



INNOVA® M2 with glass door

# M2

### One system for everything

The rack system for INNOVA M2/M3 masters nearly each challenge for wash items in surgery, ophthalmology, anaesthesia, ENT or gynaecology.

### Unique technical solutions

A microprocessor control provides safe and validatable cleaning results according to EN ISO 15883. Innovative control technique with top-quality sensors and efficient micro-processors and controls guarantees for exact water pressure, exact temperature values, times and dosing. The controller software provides a fully validatable process. In case of error function the washer-disinfector will stop automatically. Error messages appear in the display and will be recorded.

## New M2 and M3 series



*new and nice to have:  
the optional touch pad for M3*

# There is a system behind perfect reprocessing

Features and design

## High quality material

such as stainless steel 1 – 1.25 mm thick and proven synthetic material will withstand the long-term use, even under difficult circumstances.



## Simple operation

by pre-defined standard programs for typical applications. Comfortable operation panel (Touchpad as option for INNOVA® M3).

## Precise dosing

The dosing, related by volume and viscosity, and controlled by the program, allows optimal operation in regard to efficiency and saving of cleaning agents and disinfectants.



## Easy service and simple maintenance

With technology derived from other fields, such as the PC manufacturing, e.g. the side panels can be removed most easily to create access for service. Or, as shown on the photo components can just be drawn out.



## Integrated Documentation

The new INNOVA® M2/M3 fulfils the requirement for individual documentation of all parameters of the treatment process. The controller offers the possibility to transfer the data to an external documentation-PC with Med.Basic.



## Optimal solutions also in small details

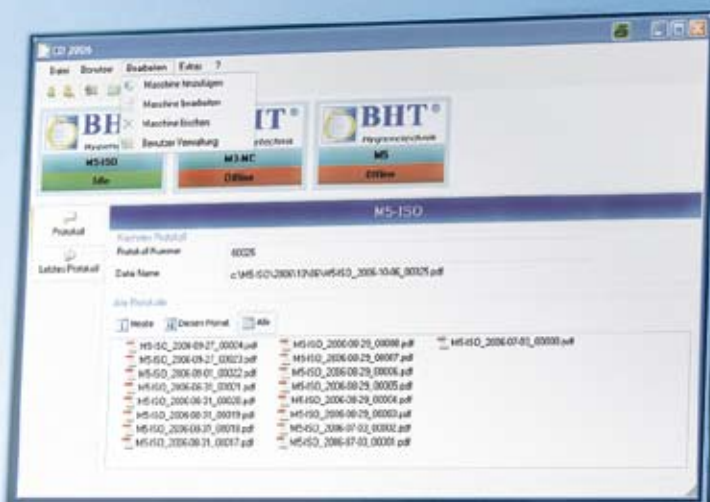
Heating elements are covered, thus preventing damages of the cleaning products. Double filter system in the pump circuit to prevent cross contamination.

**INNOVA®**  
New M2 and M3 series



# BHT Cycle Documentation system Med.Basic

Digital converting of all processing data



## The cycle documentation system Med. Basic

The cycle documentation system Med. Basic archives all relevant process data from BHT Washer-Disinfectors series M- and E-series to a PC in pdf-format.

- cycle protocol with all relevant process data such as temperature, pressure as set/real value (dependant on equipment components of WD)
- protocol master data: date, time, machine number, protocol-number, file name
- operator

Optionally, a number of WD's can be integrated and centrally administrated.

# MED.BASIC





## Everything under control – in many ways

### Examples of use

#### Load Carrier Systems

The multiple BHT-rack program provides optimum possibilities for different kinds of wash goods. For individual solutions to treat special wash items BHT creates custom made racks with wash good samples.

Are you interested in further applications and individual solutions?

You will find detailed information on our range of racks in the "Load Carrier Systems" catalogue.



MIS-instruments



Laboratory items



Standard instrument trays



Theatre shoes



AN-hoses and accessories



Ophthalmology instruments



Basket for test tubes



Basket for laboratory glassware

## Technique at a Glance

### Accessories and Technical Data

	INNOVA® M2	INNOVA® M3
<b>Dimensions:</b>		
free-standing unit W/D/H	600 x 600 x 850 mm	800 x 680 x 880 mm
Under-counter unit W/D/H	600 x 600 x 850 mm	800 x 680 x 850 mm
wash chamber W/D/H	390 x 495 x 600 mm	540 x 510 x 535 mm
volume	116 l	147 l
<b>Material:</b> Outer casing and wash chamber completely in stainless steel 304		
<b>Weight:</b> approx. 85 kg (M2) / approx. 150 kg (M3)		
<b>El. Connections:</b> 1 N/AC 230 V, 50 Hz, 16 A and 60 Hz on request (M2) / 3 N/AC 400 V, 50 Hz, 20 A and 60 Hz on request (M3)		
<b>Connections:</b>		
Cold water	3/4" 2-5 bar	3/4" 2-5 bar
Warm water	3/4" 2-5 bar	3/4" 2-5 bar
DI water	3/4" 2-5 bar	3/4" 2-5 bar
Waste water	1 1/2"	1 1/2"
Drain water hose	1/2"	3/4"
<b>Wash power:</b> fresh water system pump capacity. 140 l/min, tank heating 2,5 kW (M2) / fresh water system pump capacity. 290 l/min, tank heating 7 kW (M3)		
<b>Drying:</b> high pressure turbine 80 m <sup>3</sup> /h (M2) / high pressure turbine 150 m <sup>3</sup> /h, heating 3,4 kW (M3)		
<b>DI water boiler:</b> optional: volume 20 l, heating power 9 kW, incl. heat recovery		
<b>Dosing:</b> standard 2 dosing systems (max. 4) with dosing supervision and dynamic dosing, 2 independent microcontrollers, (M2) / microprocessor control, (M3)		
<b>Microprocessor control:</b> clear text display and key pad, 2 standard programs and a multitude of freely programmable program places for thermal and chemo-thermal disinfection, RS232 and CAN interface for communication and documentation (M2) / 2-line clear text display and key pad, optional: touchscreen 5.7", 21 standard programs, 4 freely programmable program places for thermal and chemo-thermal disinfection, RS232 and CAN interface for communication and documentation (M3)		

**INNOVA®**  
 New M2 and M3 series



CE 0297

# Atherton

**P: 1300 580 870**

**E: salesandservice@atherton.net**

**W: www.atherton.net**

BHT Hygienetechnik GmbH  
 Messerschmittstr. 11  
 86368 Gersthofen  
 Germany  
 Tel. +49-(0)821/2 78 93-0  
 Fax +49-(0)821/78 40 99  
 hygiene@bht.de  
 www.bht.de



DQS certified according to  
 DIN EN ISO 9001:2000  
 DIN EN ISO 13485:2003  
 Reg. No. 019906-01