

Atherton is a dynamic and innovative organisation operating nationally within Australia, with an office in each capital city, and internationally through its network of agents throughout Asia and the Pacific nations.

Established in 1889, Atherton is a privately owned family business, now in its fifth generation.

**To find out more about Atherton sterilizers and other products visit us on our web site [www.atherton.net](http://www.atherton.net) or phone or fax to any of our offices listed here:**

**Company Head Office Melbourne:**

A.E. Atherton & Sons Pty Ltd  
364 Darebin Road Thornbury  
VIC 3071 Australia  
Ph. 61 03 9497 2500  
Fax: 61 03 9497 1190

**Brisbane:**

66 Raynham St Salisbury  
QLD 4107 Australia  
Ph. 61 07 3277 1321  
Fax: 61 07 3875 1512

**Sydney:**

23 Lidco St Arndell Park  
NSW 2148 Australia  
Ph. 61 02 9679 8911  
Fax: 61 02 9679 8922

**Adelaide:**

Unit 22,  
11-31 Port Wakefield Rd  
Gepps Cross SA  
5012 Australia  
Ph. 61 08 8262 9044  
Fax: 61 08 8262 9344

**Perth:**

Unit 3/1914 Beach Rd  
Malaga WA 6062 Australia  
Ph. 61 08 9249 6166  
Fax: 61 08 9249 6353



# Atherton

WORLD LEADERSHIP IN STERILIZATION AND INFECTION CONTROL

TANGENT TIGER SERIES STERILIZER

Revision:02 01/06

Design and specifications may change without notice

## THE ATHERTON TANGENT TIGER SERIES STERILIZER

The Atherton Tangent Series of Sterilizers provides a powerful solution to your sterilizing requirements.

The Tangent Tiger Series is another leap forward in sterilizer design, building on the impressive design base established by the Tangent Cobra Series.

- Full colour touch screen operator interface guiding you through selecting a cycle from the full range of Pre Vacuum and General Purpose gravity cycles. Just touch an icon on the screen to select the cycle you want. Saved cycles are protected by a personnel identification number (PIN) to ensure process integrity. Want to change a cycle or create a new one, just follow the on screen prompts and it's done in a blink of the tiger's eye.
- Built with 21st century materials and components. The Tangent Series looks as exciting as it is to use. Colour toned panels sets the Tangent Series apart from the rest, brightening your work environment and blending in with the modern health care facility.
- If you want to check up on your sterilizer while watching TV you can. The Tiger is web enabled, so if you can connect to the internet, you can connect to your Tangent Tiger.

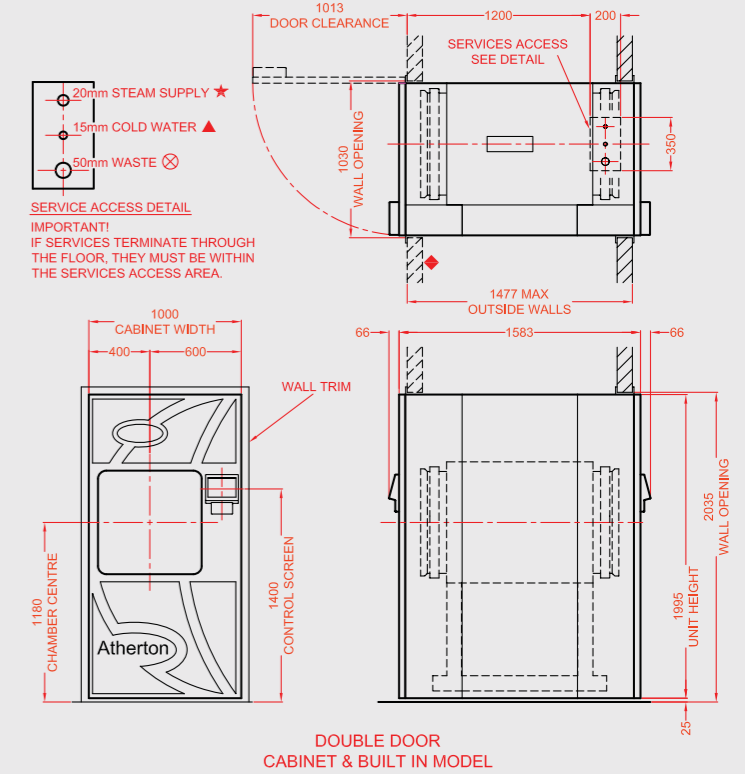
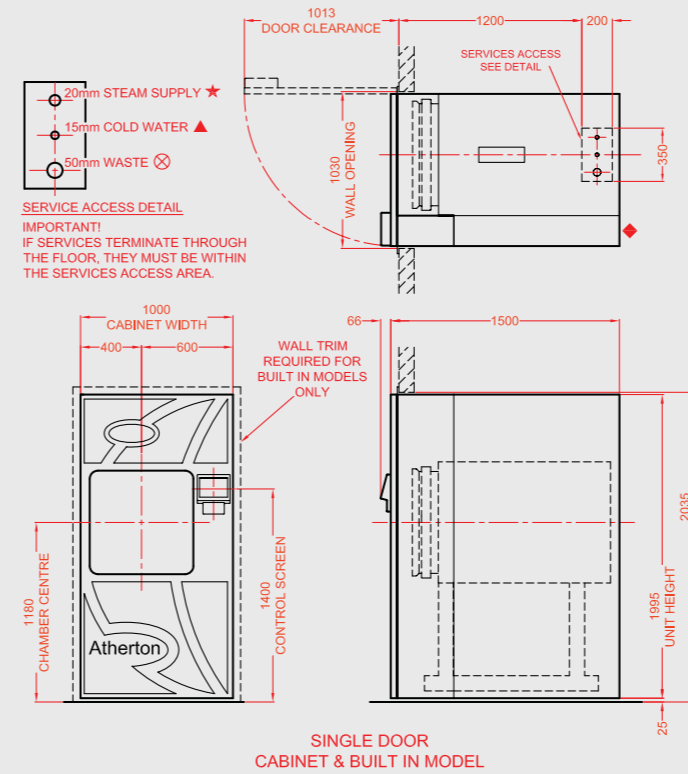
The chamber door and front panel are moulded from a heat resistant thermoplastic alloy, protecting the user from burns when loading or unloading the chamber.

Equipped with a fully automatic vertical sliding door, (you can have two of them if you want – one on each end) the Tiger has a chamber volume of 523Lt (660mm x 660mm x 1200mm) to meet the needs of the larger CSSD department. The chamber jacket and door are all fabricated from 316L stainless steel. Even the vacuum pump is stainless steel and nickel plated cast iron to ensure long life.

You can have a manual loading car and trolley (made from Stainless Steel of course), or you can let your thumb do all the work and have an auto loader option. Push the button and away the load goes!

Service access is entirely from the front of the unit. The front panel opens completely making it easy to reach everything. This speeds up your service time, saves space and solves all your plant room access problems.

The Tangent Tiger claws back running costs as well. Steam generator models (their made from 316L stainless steel too!) require only 42kW compared to the traditional 60kW. Less power less water and less space. It all adds up to saving you lots of money!



### GENERAL NOTES:

1. ALL DIMENSIONS ARE IN MILLIMETRES.
2. ALL SERVICE SPECIFICATIONS ARE DYNAMIC.
3. SERVICES AND BUILDING REQUIREMENTS ARE TO BE SUPPLIED BY THE CLIENT UNLESS OTHERWISE ADVISED.
4. WATER CONSUMPTION CAN BE CONSIDERABLY REDUCED IF CHILLED WATER FLOW & RETURN ARE AVAILABLE.

### SERVICE NOTES:

★ **STEAM** - SUPPLY TO BE BETWEEN 400 & 500 KPA AT 0.97 DRYNESS FACTOR, CHLORIDE FREE & COMPLETE WITH 20 MM ISOLATING VALVE. STEAM CONSUMPTION OF THE UNIT APPROXIMATELY 50KG/HR WITH A MAXIMUM FLOW RATE OF 85 KG/HR FOR 3 MINUTES.

▲ **COLD WATER** - SUPPLY TO BE CONSTANTLY BETWEEN 200 & 500 KPA, MAXIMUM TEMPERATURE 25°C, TREATED IF OVER 2 PPM (0.02 MMOL/L) HARDNESS, CHLORIDE FREE, COMPLETE WITH 15 MM ISOLATING VALVE & BACK FLOW PREVENTION TO AS 3500.1. WATER CONSUMPTION OF THE UNIT APPROXIMATELY 13 LITRES/MIN.

⊗ **WASTE** - 50 MM TO SEWER & IN COMPLIANCE WITH AS 3500.2.

◆ **POWER** - 3 PHASE, NEUTRAL & EARTH COMPLETE WITH ISOLATING SWITCH.

RETICULATED STEAM MODEL : 20 AMPS/PHASE.

STEAM GENERATOR MODEL : 63 AMPS/PHASE.

## TANGENT TIGER SERIES STERILIZER